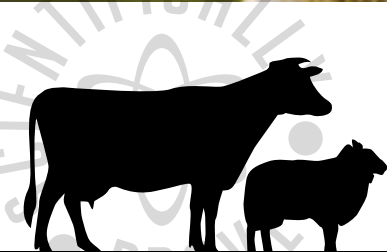




# RUMINANT



## GET IN TOUCH

 [www.epol.co.za](http://www.epol.co.za)

 [info@epol.co.za](mailto:info@epol.co.za)

FOLLOW US   



# TABLE OF CONTENTS

<b>PRODUCTS SUITED TO ALL RUMINANTS</b>	<b>3</b>
Herbivore All in One	3
Elite Production 26	3
Livestock 14	4
Bypass	4
E-Mix	4
<b>PRODUCTS SUITED TO SHEEP AND GOATS</b>	<b>7</b>
Elite Lamb Creep	7
Elite Lamb Grower	7
Elite Lamb Finisher	8
Elite Lamb and Ewe	8
Elite Stud Ram	8
Lamb and Ewe 13	11
Sheep Fattening 13	11
Epul Sheep Classic	12
Elite Goat Feed	12
<b>BEEF CATTLE</b>	<b>13</b>
Beef Finisher	14
Semi-Complete Ruminant Feed	14
Superbeef 18.5 Farmix	14





Because we're obsessed with understanding and servicing the needs of our customers and their animals, farmers have been achieving the perfect balance in animal feed with **Epol** since 1916. We understand that your livestock is your livelihood, your future.

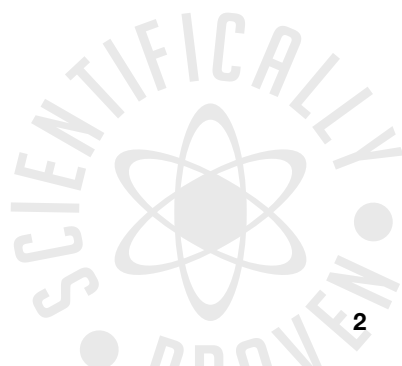
Our goal is simple: **TO BE A FARMER'S FIRST CHOICE.**

As a leader in the animal feed industry, we provide top quality, scientifically formulated and balanced feed for a range of species including cattle, sheep and goats, dairy, broiler, layer, pig, game, horse, ostrich and more.

Furthermore, our research and development team, sales teams and qualified animal nutritionists provide superior service, technical advice and customised solutions to ensure your animals achieve their genetic potential from our range of products.

### **WE ARE ALL ABOUT**

- Innovative feed and nutrition technology
- Scientifically formulated precision diets
- Optimum cost based on production objective
- Animal performance and health assured



# PRODUCTS SUITED FOR ALL RUMINANTS

NAME	Herbivore All In One	Elite Production 26
ACT 36/1947 Reg. No.	V22476	V31633
CRUDE PROTEIN	15%, 8.87% ex NPN	26%, 43.75% ex NPN
CLASS	Herbivore Feed	Protein & Energy Supplement for Sheep & Cattle
APPLICATION	Production supplement for all herbivore animals on green pastures.	Supply as a supplement on dry veld, crop residues or pastures.
ADVANTAGES	<ul style="list-style-type: none"> <li>• Urea free</li> <li>• Includes minerals to prevent bladder stones in rams</li> <li>• Made with natural protein</li> <li>• High organically bound zinc levels</li> <li>• Increases body condition of bulls &amp; rams</li> <li>• Maximises fertility</li> <li>• Healthy foetal growth</li> <li>• Increases milk production</li> </ul>	<ul style="list-style-type: none"> <li>• High in protein &amp; energy</li> <li>• Contains an extensive range of vitamins, minerals &amp; trace minerals</li> <li>• Stimulates roughage intake by supporting the digestion of protein</li> <li>• Stimulates body weight gain, conception rate and milk production</li> </ul>
DAILY FEEDING RECOMMENDATION	<ul style="list-style-type: none"> <li>• Feed as a supplement at a maximum level of 1% of bodyweight</li> <li>• Supply fresh roughage ad lib</li> </ul>	Feed as supplement on dry veld, crop residues or pastures as follows: <ul style="list-style-type: none"> <li>• Sheep/Goats: 250 - 425 g</li> <li>• Cattle: 1 - 2 kg</li> </ul>



Livestock 14	Bypass	E-Mix
V31634	V21556	V31636
14%, 30% ex NPN	30%, NPN FREE	10%, NPN FREE
Protein & Mineral Supplement for Ruminants	Protein Concentrate for Complete Ruminant Feeds	Concentrate for Complete Cattle and Sheep Finisher
Supply as a supplement on dry veld, crop residues or pastures.	Mix into rations to supply protein.	Mix into rations to supply energy.
<ul style="list-style-type: none"> <li>• Supplies all the minerals &amp; vitamins required when grazing dry veld</li> <li>• Supports the rumen function of animals grazing dry veld</li> <li>• Improves the body condition of mature animals</li> <li>• Stimulates milk production</li> </ul>	<ul style="list-style-type: none"> <li>• Supplies optimum levels of amino acids for maximum performance</li> <li>• Combine with concentrates to raise the quality of protein in the final feed</li> </ul>	<ul style="list-style-type: none"> <li>• Low cost per unit of energy</li> <li>• Ideal to use when grain prices are high</li> <li>• A versatile energy source that can replace up to 100% of grains in complete feed mixtures</li> <li>• Ideal for use in mixes to be pelleted</li> <li>• Combine with concentrates to raise the quality of energy in the final feed</li> </ul>
<p>Feed as a supplement on dry veld, crop residues or pastures as follows:</p> <ul style="list-style-type: none"> <li>• Sheep/Goats: 300 - 500 g</li> <li>• Cattle: 1.1 - 2 kg</li> </ul>	<ul style="list-style-type: none"> <li>• Consult your nearest technical advisor for recipe recommendations</li> </ul>	<ul style="list-style-type: none"> <li>• Consult your nearest technical advisor for recipe recommendations</li> </ul>



# SHEEP & GOATS

**Epol** has a scientifically balanced sheep feed range for each stage of production in modern day sheep farming as well as a number of other products aimed at small stock.

	PRODUCTION STAGE	PRODUCT
<b>EWES</b>	Mating/Flush	Elite Lamb Finisher
	Early Pregnancy	Lamb and Ewe 13
	Late Pregnancy	Elite Lamb and Ewe
	Lactation	Elite Lamb and Ewe
	Dry	Epol Sheep Classic
<b>LAMBS</b>	Suckling	Elite Lamb Creep
	Growing out replacement ewes	Elite Lamb Grower
	Feedlot	Elite Lamb Grower/Finisher
	Preparing rams for mating season/auctions	Elite Stud Ram

Use the following guidelines to adapt lambs before feeding **Epol** products ad lib:

<b>DAY</b>	1-2	3-4	5-6	7-8	9-10	10 +
<b>CONCENTRATE AS % OF BODYWEIGHT</b>	1.5%	2%	2.5%	3%	3.5%	Ad lib
<b>AMOUNT OF ROUGHAGE</b>	Ad lib					

## ADVANTAGES OF EPOL SHEEP AND GOAT FEEDS

- A combination of the best quality minerals, trace minerals & vitamins.
- High quality bypass protein sources to deliver the right amino acid ratio needed for maximum growth.
- Optimum starch levels in each product.
- Contains a combination of urea and ammonium chloride as the NPN source to aid the digestion of low-quality roughage.
- Ammonium chloride prevents bladder stones in rams.
- Includes a buffer to prevent acidosis.
- Contains a growth promoter to improve feed conversion and growth.
- Contains ionophores to prevent coccidiosis.
- Contains flavourants for increased palatability and intake.



## PRACTICAL TIPS FOR SHEEP FATTENING

- High quality diets will ensure weaner lambs adapt faster in the feedlot and achieve a higher feed intake.
- Provide approximately 6 litres of clean, cool drinking water, per sheep per day.
- Allow 1.5 – 2.5 m<sup>2</sup> of floor space per sheep.
- Ensure 20 cm of trough space per sheep during the adaption phase, and 10 cm per sheep thereafter.
- The feed bunk must be 30 cm in width and 20 cm high.
- It is important to maintain good feed bunk management to avoid waste.
- Provide fresh feed at least twice a day.
- Dry matter intake of sheep is 3.8 – 4.2% of bodyweight after the adaptation period.
- Lambs that received **Elite Lamb Creep Pellets** adapt easier in feedlots compared with lambs that did not.
- To limit nutritional disturbances adapt the animal from one diet to another by replacing 25% of the feed per day over a 4-day period.



# PRODUCTS SUITED TO SHEEP/GOATS: EPOL ELITE SHEEP FEED RANGE

NAME	Elite Lamb Creep	Elite Lamb Grower
ACT 36/1947 Reg. No.	V31080	V31079
CRUDE PROTEIN	16%, 9.11% ex NPN	15%, 30.06% ex NPN
CLASS	Sheep Grower	Sheep Grower
APPLICATION	<ul style="list-style-type: none"> <li>• Creep feed for suckling lambs.</li> </ul>	<ul style="list-style-type: none"> <li>• Adapting &amp; fattening lambs in feedlots.</li> <li>• Supplemental feed to fatten lambs on pastures or roughage.</li> </ul>
ADVANTAGES	<ul style="list-style-type: none"> <li>• Lambs have the highest weight gain per unit of feed during this stage of life.</li> <li>• Ammonium chloride to prevent bladder stones in rams.</li> <li>• Ionophores optimise growth.</li> <li>• Stimulates rumen development.</li> <li>• Vigorous lamb growth post weaning.</li> <li>• Easy adaption in feedlots.</li> </ul>	<ul style="list-style-type: none"> <li>• Delivers the correct balance between energy and protein to ensure optimal growth.</li> <li>• Ionophores improve feed conversion, reduce bloat and prevent coccidiosis.</li> <li>• Ammonium chloride to prevent bladder stones in rams.</li> <li>• Supplies high quality trace minerals, macro minerals and vitamins, essential for health and growth.</li> </ul>





<b>Elite Lamb Finisher</b>	<b>Elite Lamb And Ewe</b>	<b>Elite Stud Ram</b>
V31076	V31078	V32831
12%, 37.6% ex NPN	15%, 30.06% ex NPN	13% CP, 40% ex NPN
Sheep Finisher	Sheep Ewe and Lamb Feed	Complete Feed for Rams
<ul style="list-style-type: none"> <li>• Finishing sheep prior to slaughter.</li> <li>• Flush feed to optimise fertility of ewes.</li> </ul>	<ul style="list-style-type: none"> <li>• Ewes in intensive lambing systems.</li> <li>• Pregnant or lactating ewes on pastures.</li> </ul>	<ul style="list-style-type: none"> <li>• Supplemental feed to young or mature rams on dry veld, pastures or roughage.</li> <li>• Complete feed for preparing rams for shows or auctions.</li> </ul>
<ul style="list-style-type: none"> <li>• Ensures a high dressing percentage when fed for the last two weeks prior to slaughter.</li> <li>• Unlocks the reproduction potential in ewes when fed as flush feed.</li> <li>• High energy content, ideal to stimulate higher ovulation rate in ewes at mating.</li> </ul>	<ul style="list-style-type: none"> <li>• Supplies all the nutrients that ewes require during mating, pregnancy and lactation.</li> <li>• When fed as flush feed, ewes gain body condition and achieve better conception rates.</li> <li>• Prevents bodyweight loss during pregnancy, and the incidence of pregnancy disease.</li> <li>• Improves lambing percentage by supporting foetal growth.</li> <li>• Decreases lamb mortalities by ensuring good quality colostrum in ewes.</li> <li>• Ensures higher weaning percentage through stimulation of milk production to ensure healthy lambs.</li> </ul>	<ul style="list-style-type: none"> <li>• Delivers necessary nutrients for healthy testes development.</li> <li>• Ammonium chloride to prevent bladder stones in rams.</li> <li>• Supplies optimal ratio of trace minerals, amino acids &amp; energy.</li> <li>• Ensures high fertility in rams.</li> <li>• Supports wool growth.</li> <li>• Replenishes body reserves after mating season.</li> </ul>



# PRODUCTS SUITED TO SHEEP/GOATS: EPOL ELITE SHEEP FEED RANGE (CONTINUE)

NAME	Elite Lamb Creep	Elite Lamb Grower												
<b>DAILY FEEDING RECOMMENDATION</b>	<ul style="list-style-type: none"> <li>Feed in a creep feeder to suckling lambs from 2 weeks.</li> </ul>	<ul style="list-style-type: none"> <li>Adapt lambs according to the adaptation programme on pg 5.</li> </ul>												
	<table border="1"> <thead> <tr> <th></th> <th>% OF BODY WEIGHT</th> <th>LIVE WEIGHT (KG)</th> <th>INTAKE/ DAY/ ANIMAL</th> </tr> </thead> <tbody> <tr> <td>START @ DAY 7</td> <td>0.42%</td> <td>6</td> <td>25.2</td> </tr> <tr> <td>END @ WEANING (DAY 90)</td> <td>1.50%</td> <td>30</td> <td>450</td> </tr> </tbody> </table>		% OF BODY WEIGHT	LIVE WEIGHT (KG)	INTAKE/ DAY/ ANIMAL	START @ DAY 7	0.42%	6	25.2	END @ WEANING (DAY 90)	1.50%	30	450	<ul style="list-style-type: none"> <li>After adaptation, feed ad lib.</li> </ul>
		% OF BODY WEIGHT	LIVE WEIGHT (KG)	INTAKE/ DAY/ ANIMAL										
	START @ DAY 7	0.42%	6	25.2										
END @ WEANING (DAY 90)	1.50%	30	450											
<ul style="list-style-type: none"> <li>Place the creep feeders out in the beginning of the lambing season and feed the ewes right next to the creep feeders. This assists in adapting young lambs to the feeders, ensuring high creep feed intake shortly after onset.</li> </ul>														



Elite Lamb Finisher	Elite Lamb And Ewe	Elite Stud Ram								
<p><b>Finishing Lambs</b></p> <ul style="list-style-type: none"> <li>• Feed ad lib during the last two weeks prior to slaughter.</li> <li>• Should a fatter carcass be desired, the period fed can be extended.</li> </ul> <p><b>Flush Feed</b></p> <ul style="list-style-type: none"> <li>• Feed at 300 – 500 g/day from 3 weeks before mating, until 2 weeks after mating.</li> </ul>	<p><b>Intensive Lambing Systems</b></p> <ul style="list-style-type: none"> <li>• Feed as a supplement from at least 6 weeks prior to lambing.</li> <li>• Thereafter, feed at 300 – 500 g per day for ewes on lush pastures, or 500 – 1 000 g for ewes on dry veld, roughage or crop residues.</li> <li>• Feed ad lib to ewes in lambing pens.</li> </ul> <p><b>Extensive Systems</b></p> <ul style="list-style-type: none"> <li>• Feed as a supplement during the last 6 weeks prior to lambing, until 6 weeks after lambing.</li> <li>• Ensure proper adaption before feeding ad lib.</li> </ul> <p><b>Flush Feed</b></p> <ul style="list-style-type: none"> <li>• Feed at 300 – 500 g/day from 3 weeks before mating, until 2 weeks after mating.</li> </ul>	<p><b>Ram Maintenance</b></p> <table border="1" data-bbox="759 403 1044 603"> <thead> <tr> <th>Ram Bodyweight</th> <th>Feeding Rate (g/ram/day)</th> </tr> </thead> <tbody> <tr> <td>50 kg</td> <td>1 030</td> </tr> <tr> <td>100 kg</td> <td>1 740</td> </tr> <tr> <td>150 kg</td> <td>2 360</td> </tr> </tbody> </table> <p>Supply additional roughage ad lib.</p>	Ram Bodyweight	Feeding Rate (g/ram/day)	50 kg	1 030	100 kg	1 740	150 kg	2 360
Ram Bodyweight	Feeding Rate (g/ram/day)									
50 kg	1 030									
100 kg	1 740									
150 kg	2 360									



# PRODUCTS SUITED TO SHEEP/GOATS: OTHER EPOL SHEEP FEED

NAME	Lamb And Ewe 13	Sheep Fattening 13
ACT 36/1947 Reg. No.	V31075	V31077
CRUDE PROTEIN	13% CP, 34.7% ex NPN	13% CP, 34.7% ex NPN
CLASS	Ewe and Lamb Feed	Complete Sheep Finisher Feed
APPLICATION	<ul style="list-style-type: none"> <li>• Supply to ewes during pregnancy and lactation.</li> <li>• Feed to ewes during their dry period to prevent weight loss on low quality veld.</li> </ul>	<ul style="list-style-type: none"> <li>• Fatten lambs.</li> <li>• Gain condition in ewes prior to mating or in early pregnancy.</li> <li>• Fatten mature ewes prior to slaughter.</li> </ul>
ADVANTAGES	<ul style="list-style-type: none"> <li>• Contains a high level of rumen bypass protein.</li> <li>• High protein quality combined with energy.</li> <li>• Ensures good milk production.</li> <li>• Ideal to feed to replacement ewes in order to reach their target weight at puberty.</li> </ul>	<ul style="list-style-type: none"> <li>• High energy content to stimulate growth.</li> <li>• Suited to feed as supplemental feed on pastures or dry veld.</li> </ul>
DAILY FEEDING RECOMMENDATION	500 – 750 g per head per day along with good quality pastures.	Feed ad lib after adaptation period.



<b>Epol Sheep Classic</b>	<b>Elite Goat Feed</b>								
V32832	V32830								
10% CP, 40% ex NPN	15% CP, 30.06% ex NPN								
Sheep Drought & Maintenance Feed	Complete Goat Feed								
<ul style="list-style-type: none"> <li>• All-rounder product for sheep in dry areas where pasture and roughage are scarce.</li> </ul>	<ul style="list-style-type: none"> <li>• Feed goats during any production stage.</li> <li>• Feed as a supplement for goats on pasture or roughage, at a max of 2.5% of bodyweight.</li> <li>• Feed to lactating goats to ensure good milk production.</li> </ul>								
<ul style="list-style-type: none"> <li>• Contains urea.</li> <li>• Contains a balanced amount of natural protein and nitrogen.</li> <li>• Aids the digestion of high fibre roughages.</li> <li>• Prevents bladder stones in rams.</li> </ul>	<ul style="list-style-type: none"> <li>• Supplies high quality trace minerals, macro minerals and vitamins.</li> <li>• Supports growth in young kids.</li> <li>• Ensures high levels of milk production.</li> <li>• Increases fertility when fed as flush feed prior and during mating.</li> </ul>								
<p><b>Maintenance feed</b></p> <table border="1" data-bbox="64 1023 454 1145"> <thead> <tr> <th>Body Weight</th> <th>Feeding Rate (g/head/day)</th> </tr> </thead> <tbody> <tr> <td>50 kg</td> <td>920</td> </tr> <tr> <td>60 kg</td> <td>1 250</td> </tr> <tr> <td>80 kg</td> <td>1 550</td> </tr> </tbody> </table>	Body Weight	Feeding Rate (g/head/day)	50 kg	920	60 kg	1 250	80 kg	1 550	<p>Adapt goats by feeding at a rate of 1% of bodyweight for 3 days. Thereafter, gradually increase the amount fed to a max of 2.5% of bodyweight. Supply additional roughage ad lib.</p>
Body Weight	Feeding Rate (g/head/day)								
50 kg	920								
60 kg	1 250								
80 kg	1 550								





# BEEF CATTLE

## PRACTICAL TIPS

### Feedlot specifications

- Feedlots must be placed at an angle of 1 – 7 degrees to ensure adequate drainage and prevent problems such as foot rot.
- Provide approximately 40 litres of clean, cool drinking water, per head per day.
- Allow floor space of 10 – 15 m<sup>2</sup>/head.
- Allow feed trough space of 40 cm per head during the adaptation period and 20 cm per head thereafter.
- Allow approximately 10 cm of feed trough space per head of cattle when using the cafeteria system.
- The feed trough must be 600 mm wide and 40 cm in height.
- Establish round corners in the trough to prevent feed from accumulating in the corners.

### Feed trough management

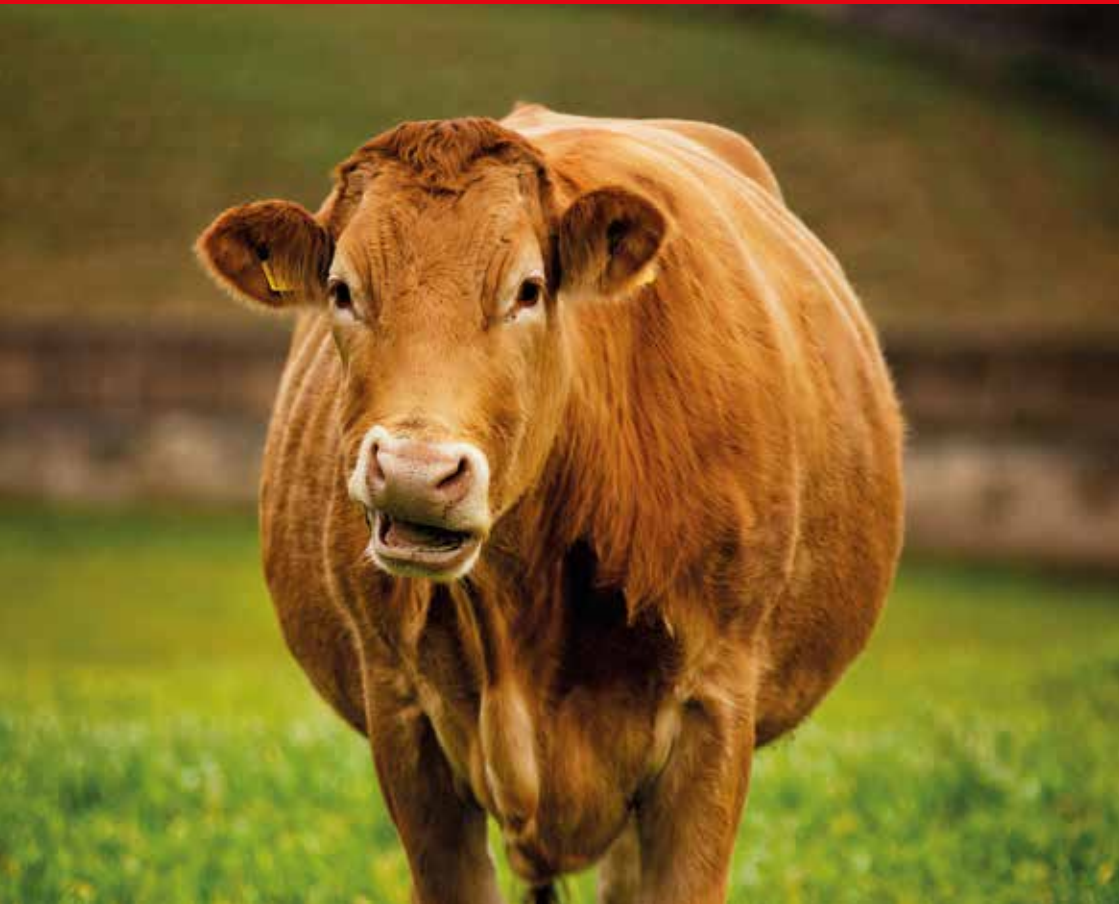
- Expect dry matter intake of 2.8 – 3% of bodyweight after adaptation.
- Ensure feed troughs always contain feed to prevent animals from overeating. This prevents bloat & diarrhoea.
- Maintain good feed trough management to avoid waste:
  - It is important that the animal eat the complete diet within
  - Provide fresh feed at least twice a day.
  - Prevent feed from getting wet.
  - Keep the feed trough clean to prevent the development of mycotoxins.
  - Animals ingest little or no food during the hottest part of the day.
  - Feed, especially when high in moisture, is negatively impacted when placed in the feed trough during the hottest part of the day.
  - During the warm months, it is advisable to give ± 40% of the diet in the early morning and ± 60% of the diet in the afternoon.

### COMPULSORY ADAPTATION PROGRAMME TO PREVENT RUMEN ACIDOSES:

DAY	1-3	4-5	6-7	8-9	10-11	12 +
CONCENTRATE AS % OF BODYWEIGHT	1%	1.5%	2%	2.5%	3%	Ad lib
AMOUNT OF ROUGHAGE	Ad lib					

<b>NAME</b>	<b>Beef Finisher</b>	<b>Semi-Complete Ruminant Feed</b>	<b>Superbeef 18.5 Farmix</b>								
<b>ACT 36/1947 Reg. No.</b>	V503	V501	V9608								
<b>CRUDE PROTEIN</b>	13% CP, 30% ex NPN	13% CP, 30% ex NPN	18.5% CP, 40.34% ex NPN								
<b>CLASS</b>	Cattle Finisher Feed	Cattle Finisher Feed	Protein Concentrate for Cattle Finisher Feed								
<b>APPLICATION</b>	Cattle finisher feed in feedlots, or supplemental feed to fatten cattle on pastures or roughage.	Use as an economic fattening feed for beef cattle.	Mix with grain and roughage to create beef fattening rations.								
<b>ADVANTAGES</b>	<ul style="list-style-type: none"> <li>• Ensures economical beef cattle finishing at the lowest cost per kg mass increase.</li> <li>• Contains a growth enhancer which promotes feed conversion rate and growth in cattle as well as preventing feeding disorders and coccidiosis to ensure maximum profit.</li> <li>• Provides optimal quantities of quality energy, natural protein, NPN, minerals &amp; trace minerals for maximum performance.</li> <li>• Supplies enough rumen bypass protein and energy for optimal bone and muscle growth.</li> </ul>										
<b>DAILY FEEDING RECOMMENDATION</b>	<p><b>Complete Cattle Finisher Feed</b> Mix 70% Beef Finisher with 30% roughage and feed ad lib.</p> <p><b>Cafeteria System</b> Feed ad lib with good quality fresh hay available at all times.</p>	<p><b>Backgrounding</b> Feed at 1.5 – 2% of bodyweight on pastures or with roughage to prepare the rumen for feedlotting.</p> <p><b>Feedlotting</b> After adaptation, feed ad lib with fresh chopped roughage in a feedlot.</p> <p><b>Supplementation on veld</b> After adaptation, feed as supplemental feed on veld at 1.5 – 2% of bodyweight.</p>	<p><b>Mixing recommendation</b></p> <table border="1"> <thead> <tr> <th>Ingredient</th> <th>% Inclusion</th> </tr> </thead> <tbody> <tr> <td>Superbeef 18.5 Farmix</td> <td>37.5%</td> </tr> <tr> <td>Finely Ground Maize</td> <td>37.5%</td> </tr> <tr> <td>Chopped Roughage</td> <td>25%</td> </tr> </tbody> </table> <p>Feed this mix ad lib after adaptation.</p>	Ingredient	% Inclusion	Superbeef 18.5 Farmix	37.5%	Finely Ground Maize	37.5%	Chopped Roughage	25%
Ingredient	% Inclusion										
Superbeef 18.5 Farmix	37.5%										
Finely Ground Maize	37.5%										
Chopped Roughage	25%										





## CONTACT INFORMATION

### MILLS:

Berlin (043) 685 2111  
Pietermaritzburg (033) 387 2460  
Pretoria West (012) 386 0469  
Rustenburg (087) 365 0581  
Vaalwater (087) 820 4580  
Worcester (087) 365 6360

### FEED SHOPS:

Estcourt (036) 352 3141  
Pietermaritzburg (033) 397 1227

Customer Care Line: 086 177 7177  
WhatsApp: 087 359 0476

